

# Experiences & Lesson Learn

## Multi-stakeholders' Meeting

*18<sup>th</sup> June, 2013*

Babarmahal, Kathmandu



## NEFIN CC REDD Partnership Program, Nepal

Pasang Dolma Sherpa  
National coordinator

# Experiences on the ground

- Awareness Raising and Capacity Building
  - Research/Trainings/ publications/ Community Radio/TV/Documentary
- Advocacy and lobby
  - Relevant Agencies ( Govt./ CSO/ NGO/INGO/ Bilateral Agencies
- CB REDD+
  - Forest Carbon Inventory/ CBMIS
- School Program: Environmental Education and Social Studies
  - Curriculum
  - Text books
- Livelihoods : Social Entrepreneurs Development

## Awareness Raising Publications





# Some Glimpses of Activities: National, Regional and local level

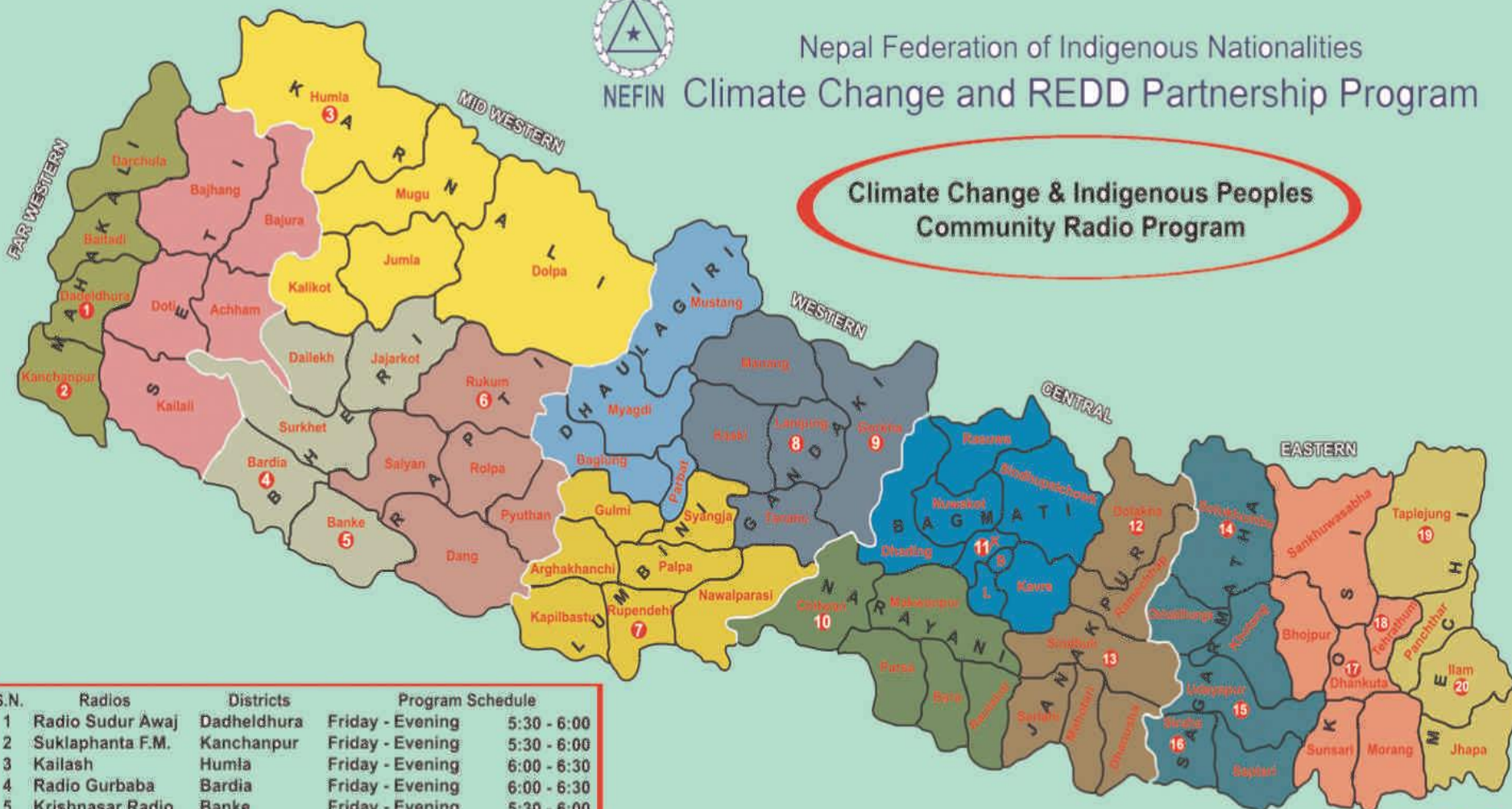






# Nepal Federation of Indigenous Nationalities NEFIN Climate Change and REDD Partnership Program

## Climate Change & Indigenous Peoples Community Radio Program



S.N.	Radios	Districts	Program Schedule	
1	Radio Sudur Awaj	Dadheldhura	Friday - Evening	5:30 - 6:00
2	Suklaphanta F.M.	Kanchanpur	Friday - Evening	5:30 - 6:00
3	Kailash	Humla	Friday - Evening	6:00 - 6:30
4	Radio Gurbaba	Bardia	Friday - Evening	6:00 - 6:30
5	Krishnasar Radio	Banke	Friday - Evening	5:30 - 6:00
6	Radio Sano Bheri	Rukum	Saturday - Morning	8:30 - 9:00
7	Jagran Radio	Rupandehi	Friday - Evening	7:00 - 7:30
8	Marshyangdi F.M.	Lamjung	Friday - Evening	7:00 - 7:30
9	Radio Gorkha	Gorkha	Friday - Evening	8:00 - 8:30
10	Synergy F.M.	Chitwan	Saturday - Evening	6:30 - 7:00
11	Gorkha F.M.	Kathmandu	Friday - Evening	7:30 - 8:00
12	Kalinchowk F.M.	Dolakha	Friday - Evening	6:30 - 7:00
13	Sindhuli F.M.	Sindhuli	Friday - Evening	6:30 - 7:00
14	Solu F.M.	Solukhumbu	Saturday - Morning	7:00 - 7:30
15	Radio Udayapur	Udaypur	Friday - Evening	6:30 - 7:00
16	Samad F.M.	Siraha	Sunday - Evening	7:30 - 8:00
17	Radio Makalu	Dhankuta	Monday - Morning	7:30 - 8:00
18	Radio Myanchham	Tehrathum	Thursday - Morning	8:15 - 8:45
19	Radio Tamor	Taplejung	Friday - Morning	9:10 - 9:40
20	Ilam F.M.	Ilam	Friday - Evening	7:00 - 7:30

K = KATHMANDU  
B = BHAKTAPUR  
L = LALITPUR

Partnership with



# Activities and some glimpses : FPIC implementation Guidelines/ process/implementation





# Some glimpses of School Activities



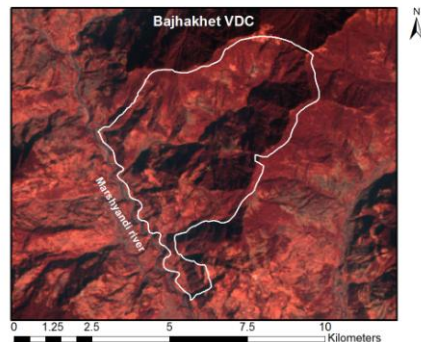
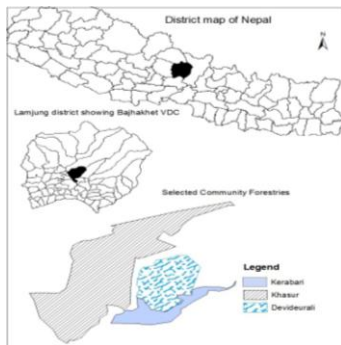
## Coordination/ net work/ Activities

- ◉ National/ Regional and Local level
- ◉ Multi-stakeholders at national and local level: NGO/INGO/CSO/Govt. Agencies
- ◉ REDD CSO Alliance
- ◉ 56 IPOs, member organizations of NEFIN
- ◉ 71 NEFIN DCC members of NEFIN at district level
- ◉ 7 Affiliated organizations of NEFIN
- ◉ Women Groups



# Community Based REDD+

- Forest Carbon Inventory Community Territory
- Delineation, Mapping and Forest Carbon Inventory



# Opportunities & Challenges

- Awareness level and capacity building process and recognition of indigenous peoples' traditional customary livelihood practices/ knowledge system in line with international convention/treaty ILO C 169 and UNDRIP:
  - National REDD strategy/ National Forestry Strategy/ National Agriculture Strategy/ National CBD Strategy/ National low-carbon Strategy
- Multi-stakeholders meeting/dialogues: Flow of information for national to local & Local to National
- Dissemination of information
- Decision making process



# *Thank You*

*For Further information*  
[pdsherpa2008@gmail.com](mailto:pdsherpa2008@gmail.com)  
[www.nefinredd.org](http://www.nefinredd.org)