



Monitoring & Evaluation Framework for the REDD+ Readiness Process

Narendra Chand (PhD),
REDD Forestry and Climate Change Cell

Katmandu July 30, 2013

Outline of presentation

- Rationale for the M&E framework development
- Process followed
- The main elements of the M&E framework developed and being finalized
- Examples from progress reporting from the report template
- Next steps to finalize
- Key lessons

Rationale for M&E framework development (1)

- The R-PP document is not results-based with explicit outcomes, outputs or indicators and milestones to measure progress. Component 6 does not establish a complete and operational M&E system.
- Mid-term progress report is 9 months overdue. Without a results framework it is difficult to show progress in the draft MTR.
- REDD+ reporting is currently focused on *activities* of the REDD Cell only.

Rationale for M&E framework development (2)

- Results Chain and Logical Framework together provide a strategic overview of the readiness process and a basis for strategic planning
- The Performance Measurement Framework (PMF) is the principal internal management tool for Monitoring and Evaluation used by Nepal REDD Cell
- Tracking progress is fundamental for programme management and reporting
- An M&E framework developed in consultation with other stakeholders allows for transparency, accountability and to integrate the activities of other stakeholders on REDD+ into country reporting

Process followed until now

- **Results Chain**

- Based on the activities described in the R-PP and the draft MTR, **outputs, outcomes and intermediate impacts** of the readiness process, defining logical links between them
- Assessment of progress using Readiness Assessment Framework

- **Logical Framework**

- Definition of 'SMART' **indicators** for each impact, output and outcome, in order to track progress (=)
[SMART = specific, measurable, attainable, relevant, time-bound]

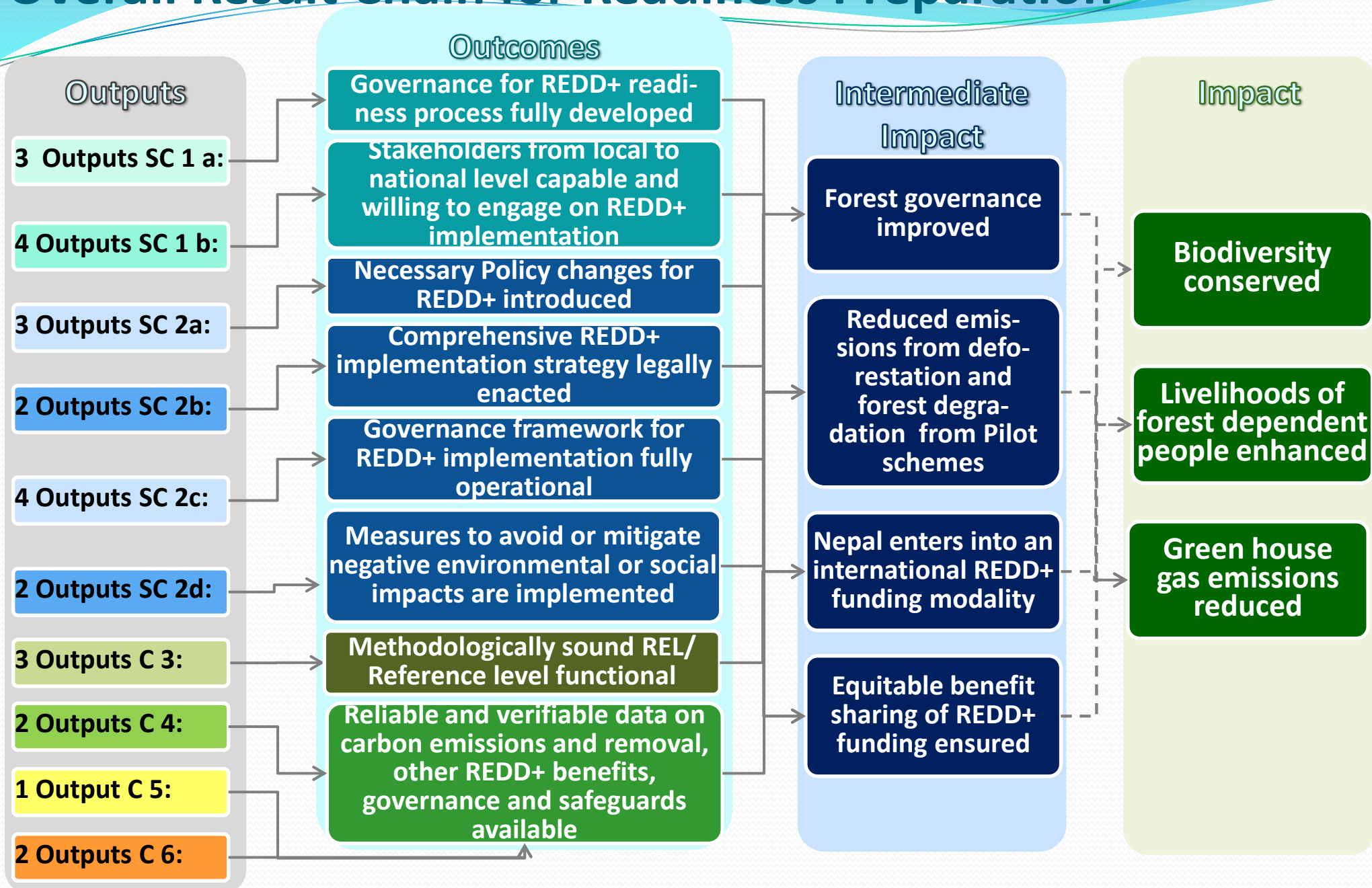
- **FCPF milestones**

- Check of coverage of **reporting requirements for FCPF** and identification of results attributable to FCPF grant (grant agreement)

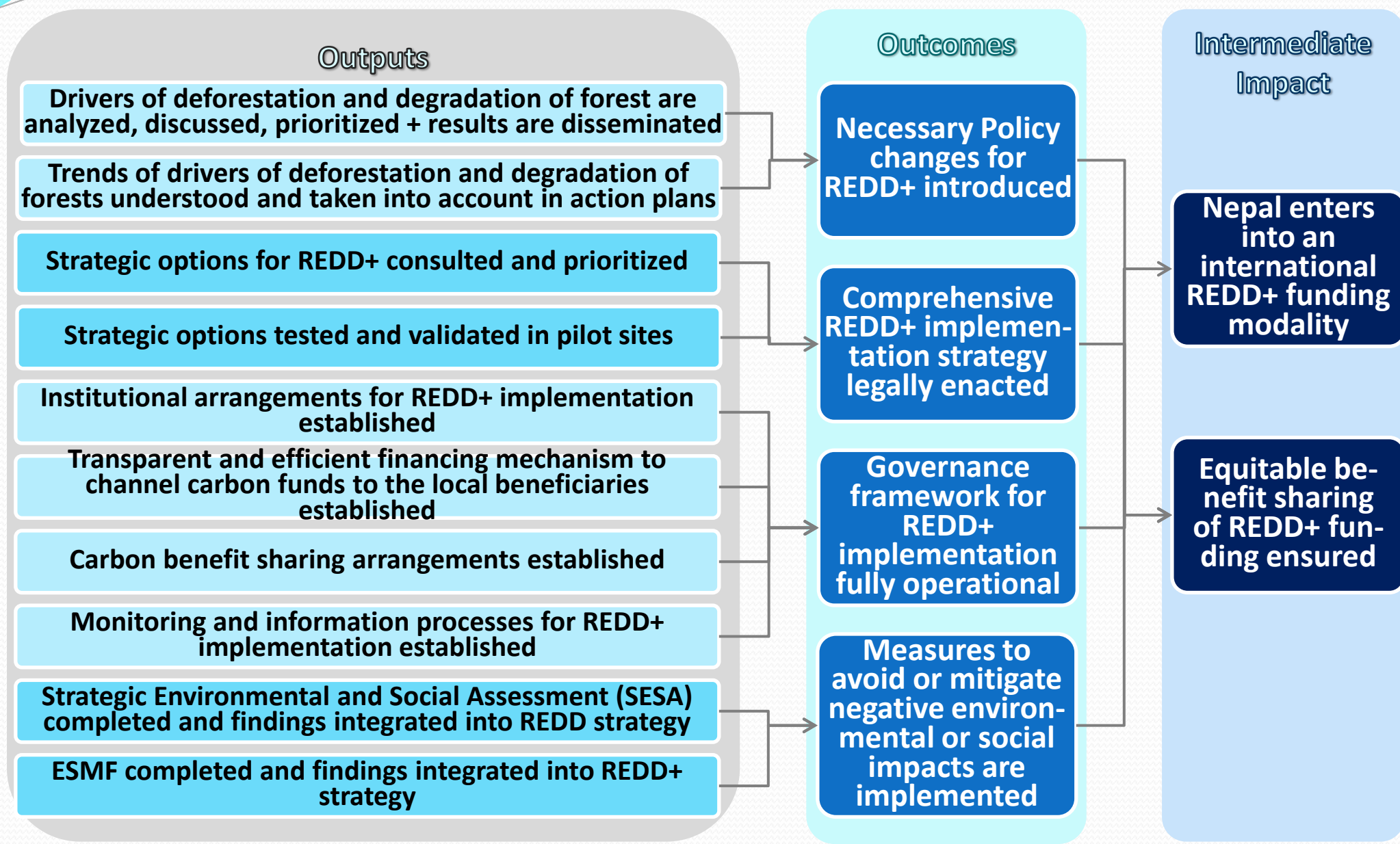
Process followed until now

- **Performance Measurement Framework (PMF))**
 - Definition of baseline values, target values by project end, source of information, frequency of data collection, and responsibilities (who, what, how, and when)
- Breakdown of end of project milestones into **annual targets** for annual reporting (**Milestone table**) with **reporting template**

Overall Result Chain for Readiness Preparation



Result chain R-PP component 2: Prepare the REDD-plus Strategy



Outputs

Component 2

Forest resources and changes are known and mapped

Drivers of deforestation and degradation of forest are analyzed, discussed, prioritized and results are disseminated

Trends of DD and FD understood and taken into account in action plans

Strategic options for REDD+ consulted and prioritized

Strategic options tested and validated in pilot sites

Institutional arrangements for REDD+ implementation established

Transparent and efficient financing mechanism to channel carbon funds to the local beneficiaries established

Carbon benefit sharing arrangements established

Monitoring and information processes for REDD+ implementation established

Outcomes

Necessary Policy changes for REDD+ introduced

Comprehensive REDD+ implementation strategy legally enacted

Governance framework for REDD+ implementation fully operational

Intermediate Impact

Forest governance improved

Reduced emissions from deforestation and forest degradation from Pilot schemes

Nepal benefits from international REDD+ funding modality

Equitable benefit sharing of REDD+ funding ensured

Impact

Biodiversity conserved

Livelihoods of forest dependent people enhanced

Green house gas emissions reduced

Outputs

Component 2

Strategic Environmental and Social Assessment (SESA) completed and findings integrated into REDD strategy

ESMF completed and findings integrated into REDD+ strategy

Component 3

Baseline of deforestation and degradation rates and trends, and of biomass and carbon stocks in Nepal developed

Reference scenarios and emissions estimates elaborated

Capacities for Forest Carbon monitoring at from national to community level created

Outcomes

Measure to avoid or mitigate negative environmental or social impacts are implemented

Methodologically sound REL/Reference level functional

Intermediate Impact

Forest governance improved

Reduced emissions from deforestation and forest degradation from Pilot schemes

Nepal benefits from international REDD+ funding modality

Equitable benefit sharing of REDD+ funding ensured

Impact

Biodiversity conserved

Livelihoods of forest dependent people enhanced

Green house gas emissions reduced

OUTPUTS

Component 4

National Forest Monitoring system operational

Joint information system on Multiple Benefits, Other Impacts, Governance, and Safeguards operational

Component 5

R-PP financial needs covered in a timely manner

Component 6

Consulted Program Monitoring and evaluation framework

REDD+ readiness assessed

Outcomes

Reliable and verifiable data on carbon emissions and removal, other REDD+ benefits, governance and safeguards available

Monitoring and evaluations of the program performance reported periodically

Intermediate Impact

Forest governance improved

Reduced emissions from deforestation and forest degradation from Pilot schemes

Nepal benefits from international REDD+ funding modality

Equitable benefit sharing of REDD+ funding ensured

Impact

Biodiversity conserved

Livelihoods of forest dependent people enhanced

Green house gas emissions reduced

The Logical Framework (extract)

Level	Results	Indicators	Target by 8/2015	Assumptions
Intermediate Impact				
I1	Forest governance improved	<p>I1.1 Degree to which decision making processes related to ER and forest resource management allow for active multi-stakeholder participation</p> <p>I1.2. Number of policy reforms initiated, completed or underway complying to REDD+ standards</p>	<p>Improved active multi-stakeholder participation (including CSOs, IPs and local communities)</p> <p>Tbd by action plan and R-Package</p>	<p>GoN maintains commitment for REDD+</p> <p>Continuing interest of int'l community in REDD +</p>
R-PP component 2: Prepare the REDD-plus Strategy				
Outcome 6	Measures to avoid or mitigate negative environmental or social impacts are implemented	O6.1 Degree of implementation of measures foreseen in ESMF	All necessary measures	The GoN remains fully committed to the REDD+
R-PP sub-component 2.d: Social and Environmental Impacts during readiness preparation and REDD+ implementation				
Output 2.d.1	Strategic Environmental and Social Assessment (SESA) completed and findings integrated into REDD strategy	<p>2.d.1.i Degree of advancement of SESA completion and validation</p> <p>2.d.1.ii Number of stakeholders (by category, gender & age) consulted and trained during SESA process</p>	<p>SESA validated by all Stakeholders</p> <p>600 participants at 2 national, 1 regional, 3 local level consultations, 6 learning group</p>	The social context allows civil society and minority representatives to actively engage in the process
Output 2.d.2	ESMF completed and findings integrated into REDD+ strategy	<p>2.d.2.i ESMF developed and approved by APEX body</p> <p>2.d.2.ii Examples of indicators for enhancement of livelihoods of local communities and for biodiversity conservation in in ESMF and REDD+ strategy</p>	<p>ESMF approved by APEX body-by 3/2014</p> <p>REDD+ strategy, monitoring and ER-Programs incorporate indicators related to biodiversity conservation and livelihood of local communities</p>	

The Performance Measurement Framework (PMF) (extract)

Results	Indicators	Baseline	Target by 08/2015	Methods/Sources of Information	Frequency	Responsibility	TL
R-PP component 1 Organize and Consult							
Outcome 1 Governance for REDD+ readiness process fully developed	O1.1 No of complaints on REDD+ Governance recorded	n/a	Decreasing number of Complaints on REDD+ Governance	Analysis of complaints received by MoFSC and their follow-up	Annually	REDD Cell/ MoFSC	
	O1.2 MTR and R-Package discussed with all relevant Stakeholders before submission	n/a	MTR and R-Package discussed with relevant Stakeholders before submission	Analysis of Minutes of consultation meetings	Annually	REDD Cell	
Outcome 2: Relevant stakeholders at national, regional and local level capable and willing to engage in REDD implementation	O2.1 No of REDD pilot sites submitting proposal for REDD+ Funding	0	1	Count of CF proposals Analysis of	Annually	REDD Cell	
	O2.2 Degree of participation of different stakeholders in different events on REDD+ and No of REDD+ activities organized by other stakeholders	n/a	Increasing participation; increasing number of REDD+ activities by other stakeholders	Minutes/reports of meetings/events; annual reports of stakeholders	Annually	REDD Cell	
R-PP sub-component 1.a: National Readiness Management Arrangements							
Output 1.a.1: Output Multisectoral and crosssectoral REDD+ Governance structure operational	1.a.1.i No of APEX meetings	0	8 meetings	Minutes of meetings for 1.a.1.i-iv	Every 6 months (1.a.1.i-iv)	REDD Cell	
	1.a.1.ii No meetings of RWG	4	24 meetings				
	1.a.1.iii % of participation of APEX body and RWG members in meetings	n/a	>75% participation				
	1.a.1.iv Agendas are widely discussed and decisions made as needed	n/a	Constructive discussions, and timely decisions	Comparison of participant lists over time for 1.a.1.v-vi	Annually (1.a.1.v-vi)		
	1.a.1.v Inclusiveness of RWG sustained	tbd	5 line ministries, CSO, IP, donors,				
	1.a.1.vi Inclusiveness of APEX body sustained	tbd	9 line ministries, CSO, IP, private sector				

REDD + Annual Country Progress Reporting

1. General Introduction
2. Summary of Report
3. Progress at the Impact Level (if any data available)
4. Main Achievement and Results during the Period
5. Progress at the Outcome and Output Level
 - REDD Readiness Progress
 - Outcome level
 - Output Level
 - Key elements of performance-based payment systems for emission reductions generated from REDD+ activities
6. Issues Challenges and Risks
7. Main Lessons Learned

Country REDD Readiness Progress

Please indicate which of your country R-PP components and sub-components have received support from FCPF through the Readiness Preparation Grant

Components	Sub-components	Planned Support from FCPF (Yes/No)
1. Readiness Organization and Consultation	1a. National REDD+ Management Arrangements	Yes
	1b. Consultation, Participation, and Outreach	No
2. REDD+ Strategy Preparation	2a. Assessment of Land Use, Land Use Change Drivers, Forest Law, Policy and Governance	(Yes)
	2b. REDD+ Strategy Options	Yes
	2c. Implementation Framework	Yes
	2d. Social and Environmental Impacts	Yes
3. Reference Emissions Level/Reference Levels		Yes
4. Monitoring Systems for Forests and Safeguards	4a. National Forest Monitoring System	Yes
	4b. Information System for Multiple Benefits, Other Impacts, Governance, and Safeguards	

Level of achievement of planned milestones according to approved FCPF-financed Readiness Fund Grant (>3.2 million USD) (FCPF M&E Framework 1.3.b.):

Planned Milestones :

1.a.1 Multisectoral and cross-sectoral REDD+ Governance structure operational and maintained

1.a.2 National technical supervision and fund management capacity fully developed

...

1.b.3 Consultation of all stakeholders including IP's, social minorities and local communities at national, regional and local levels ensured

2.a.3 Trends of drivers of deforestation and degradation of forest understood and taken into account in action plans

...

2.d.1 SESA completed by 6/2012 and ESMF and findings integrated into REDD+ strategy by 3/14

3.Reference level scenarios and emissions estimates submitted by 4/2014 and capacities for carbon monitoring developed

...

6.a.2 Mid-term Progress Report by 9/2012

Level of Achievement:

Structure fully operational and continuously working

REDD cell not yet fully staffed and role of other not clearly defined. Low grant disbursement

Process quite consultative so far but limited to national level. Decentralization planned

3 out of 5 studies published on website, no action plan yet

...

SESA contract signed

Consultant recruited, inception phase has started

...

Draft not yet consulted with stakeholders

Tracking:

Please select your light rating:

- ☒ Significant progress
- ☐ Progressing well, further development required
- ☐ Further development required
- ☐ Not yet demonstrating progress
- ☐ Non Applicable

Please explain why:
Although good institutional progress on national level, many studies and consultation on strategic questions heavily delayed, including MTR. Low disbursement of FCFP grant and severe delays in pledged contributions in kind by other donors .

Next steps to finalize

- The M&E framework needs to be approved by the RWG
- The first annual report in the new format will be drafted
- Milestones and targets may need adjustment once the procurement plan for the extension phase is accepted
- Human resources for M&E need to be made available within REDD Cell and participating partners and need to be qualified for their task
- Formats for data collection and storage need to be developed and shared with partners contributing to M&E

Lessons learned

- M&E Framework is very useful for getting overall picture including the contributions of other partners to the REDD+ readiness process.
- Together annual reporting template, the M&E framework is a tool for strategic planning and program steering.
- M&E Framework can be used to extract information for different reporting requirements.

